

# Henley's Photographers

Henley-on-Thames has had various professional photographers since the end of the 19<sup>th</sup> century. Through family photographs, postcards and old books, I have managed to collect examples of many of these. As most of these photographers no longer exist in Henley, it is difficult to give much of their history except by guesswork. They are reproduced here in approximate chronological order.

As this museum is not generally for advertising, I have not included any photographers that have opened since the 1960s.

In the 1880s and 1890s, Cartes de Visites (CDVs) became popular. People would have their own portraits taken and presented on a card measuring 2.5 inches by 4 inches. These were always taken in a studio where the lighting could be controlled and the bulky cameras did not need to be moved. Even so, the sitters would have to remain still for some time while their photograph was taken.

Collecting CDVs of celebrities was also a popular pastime.

The first examples are family portraits taken by Marsh Brothers of 29 & 31 Hart Street, Henley-on-Thames. Details of their premises were printed on the back of the CDVs.



A larger version of the CDV, the Cabinet Card, measuring about 4 x 6.5 inches, was also available. W. Marshall of Clair House, Duke Street, Henley-on-Thames produced CDVs and Cabinet Cards with a blank reverse.



There was also a photographic portrait studio at 30 Northfield End, Henley-on-Thames. It was called Henley Portraits and is shown in the photograph opposite.

By 1936 this had become the Northfield End sub-post office where my grand aunt was sub-postmistress.



The family firm of George Bushell and Son, now run by a grandson in Stoke Row, was located at Forge House, Hart Street, Henley-on-Thames. Over the years they have taken studio portraits and diversified into wedding and topographical photography.

HENLEY DIRECTORY. A 13

**GEO.  
BUSHELL  
& SON**

MODERN PORTRAITURE  
AND PHOTOGRAPHY OF  
EVERY DESCRIPTION.

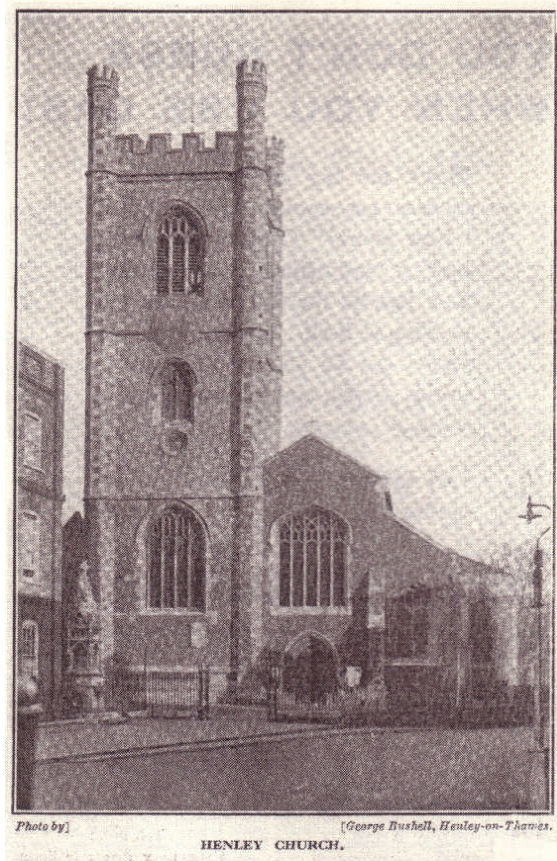
**Regatta Photographers**

*ALL KODAK SUPPLIES  
CINÉ FILMS*

**Developing  
Printing and  
Enlarging**      **PHONE:  
HENLEY  
63**

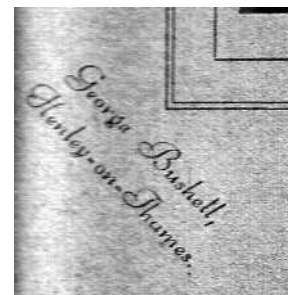
**FORGE HOUSE  
37 STUDIOS 37  
HART ST., HENLEY**  
(NEAR THE CHURCH)

1936 advertisement in the Henley Directory



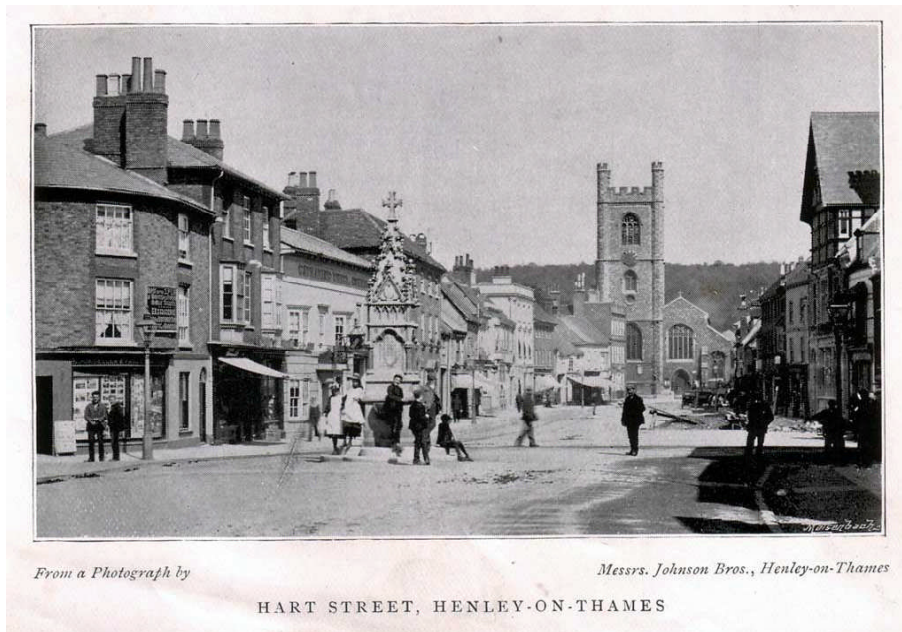
Topographical photograph published in 1936

These examples are family photographs from the 1940s and 1950s.



The mark of George Bushell on the corner of the photograph.

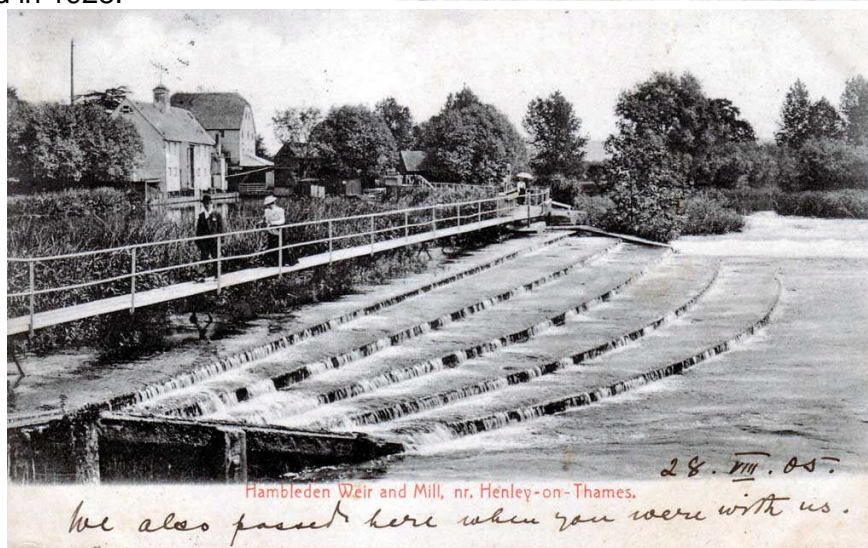
Another topographical photographer appears in Emily Climenson's 'A Guide to Henley-on-Thames', published in 1896 by Sidney H Higgins of Henley-on-Thames. This is one of several photographs in the book taken by Messrs. Johnson Bros., Henley-on-Thames.



Sidney H Higgins was a stationer and printer in Hart Street, Henley-on-Thames. Probably in the premises later occupied by W.H.Smith on the corner of Hart street and Duke street.



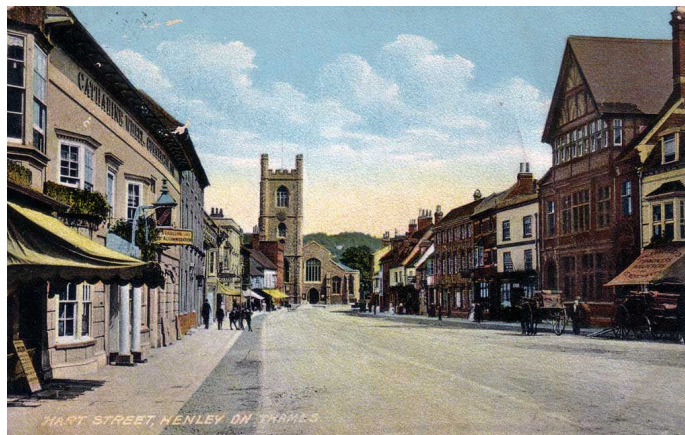
Higgins also published the postcard shown below. This example was postally used in 1928.



Other postcards that have been published in Henley-on-Thames are shown below.



Postcard by H.J.Crocker, 34 Bell Street, Henley-on-Thames. Postally used in 1906.  
(This is more a painting than a real photograph.)



Postcard by Littlewood, Henley-on-Thames. Postally used 1916.



Postcard by G.Haines, Photographer, Henley. Unused.

Another postcard is shown below. It was published by Stanley Mead & Sons, Henley-on-Thames and postally used in 1919.

There must have been some relationship with this 1936 advertisement for Stanley Mead.

**STANLEY MEAD,**  
**Duke Street, HENLEY,**  
Hairdresser, Umbrella Maker,  
and Dealer in Fishing Tackle.

